

## AGENDA

**Meeting:** CALNE AREA BOARD  
**Place:** Hilmarton Community Centre, Poynder Way, Hilmarton SN11 8SQ  
**Date:** Tuesday 11 December 2012  
**Time:** 6.30 pm

---

Including the Parishes of Calne Without, Bremhill, Hilmarton, Heddington, Cherhill, Compton Bassett and Calne.

---

**The area board welcomes and invites contributions from members of the public. The Chairman will try to ensure that everyone who wishes to speak will have the opportunity to do so.**

If you have any requirements that would make your attendance at the meeting easier, please contact your Democratic Services Officer.

**Refreshments and networking opportunities will be available from 6.00 pm.**

---

Please direct any enquiries on this agenda to Alexa Smith (Democratic Services Officer), on 01249 706610 or [alexa.smith@wiltshire.gov.uk](mailto:alexa.smith@wiltshire.gov.uk)

or Jane Vaughan (Calne Community Area Manager), on 01247 721447 or [jane.vaughan@wiltshire.gov.uk](mailto:jane.vaughan@wiltshire.gov.uk)

The papers connected with this meeting are available on the Council's website at [www.wiltshire.gov.uk](http://www.wiltshire.gov.uk)

Press enquiries to Communications on direct lines 01225 713114 / 713115.

---

### Wiltshire Councillors

Cllr Alan Hill, Calne South and Cherhill  
Cllr Christine Crisp, Calne Rural (Chairman)  
Cllr Chuck Berry, Calne North

Cllr Howard Marshall, Calne Central  
Cllr Anthony Trotman, Calne Chilvester and Abberd (Vice Chairman)

	<b>Time</b>
<p>1     <b>Chairman's Welcome and Introductions</b></p> <p>The Chairman will welcome everyone to the meeting.</p>	6.30 pm
<p>2     <b>Apologies for Absence</b></p>	
<p>3     <b>Minutes</b> (<i>Pages 1 - 6</i>)</p> <p>To approve and sign as a correct record the minutes of the meeting held on 16 October 2012.</p>	
<p>4     <b>Declarations of Interest</b></p> <p>Councillors are requested to declare any personal or prejudicial interests or dispensations granted by the Standards Committee.</p>	
<p>5     <b>Chairman's Announcements</b> (<i>Pages 7 - 8</i>)</p> <p>The Chairman will provide information about:</p> <p>a. A masterplan for Calne (attached).</p>	6.40 pm
<p>6     <b>Partner Updates</b> (<i>Pages 9 - 20</i>)</p> <p>To receive an update from the partners listed below:</p> <p>a. Wiltshire Police (attached)  b. Wiltshire Fire and Rescue Service (attached)  c. NHS Wiltshire (attached)  d. Calne Community Area Partnership (attached)  e. Calne CAYPIG (Community Area Young People's Issues Group)  f. Town and Parish Councils.</p>	6.50 pm
<p>7     <b>Spice Project</b></p> <p>Malcolm Gull (Calne Community Area Partnership) and Elly Townsend (Wiltshire Time Credits Coordinator at Spice) will provide information about the introduction of the Wiltshire Time Credits scheme in Calne.</p>	6.55 pm
<p>8     <b>Community Conversation</b></p> <p>In Calne, the area board meetings are scheduled around a 'community conversation', and the theme for this meeting is 'Welfare Reform in Wiltshire'. Ian Brown, Head of Revenues and Benefits, and Sarah Cardy, Chief Executive Officer of Wiltshire Citizens Advice, will introduce the subject and there will be an opportunity to ask questions.</p>	7.00 pm

9	<p><b>Wiltshire Online</b></p> <p>Jenny Wilcockson, Digital Literacy Coordinator, will brief the area board about the Wiltshire Online Programme and how this is related to future availability in the area.</p>	7.30 pm
10	<p><b>The Legacy of 2012</b></p> <p>Jane Scott and Laurie Bell, Communications Director, will recap on the year's events, discuss the effect the year has had and talk about how to carry on the legacy through 2013 and beyond.</p>	7.50 pm
11	<p><b>Your Local Issues</b></p> <p>Councillors will provide an update on community issues and progress on area board working groups. This will include:</p> <ul style="list-style-type: none"> <li>a. Skate board park working group – Councillor Marshall</li> <li>b. CATG (highways working group) – Councillor Crisp</li> <li>c. Calne campus working group – Councillor Hill</li> <li>d. Section 106 (Sandpit Road) working group – Councillor Trotman</li> <li>e. Air quality working group – to include consultation on the Air Quality Management Area - Councillor Hill.</li> </ul>	8.10 pm
12	<p><b>Area Board Funding (Pages 21 - 28)</b></p> <p>To consider three applications to the Community Area Grants Scheme, as follows:</p> <ul style="list-style-type: none"> <li>a. <b>Calne Community Area Partnership – seeking £995 to provide two projects promoting reading and literacy amongst children aged 8-11 and 11-14 for the Page Turners project .</b></li> <li>b. <b>Calne Tennis Club – seeking £5,000 towards four new floodlit hard tennis courts at the Beversbrook Sports facility.</b></li> <li>c. <b>St Laurence Church Hilmarton Parochial Church Council – seeking £4025 towards the provision of a new kitchen/disabled toilet and nappy changing facilities.</b></li> </ul> <p>To include delegated authority over the elections period. Since there will be a longer than usual gap between meetings early in 2013, decisions may be taken under delegated powers to avoid the need for extraordinary meetings being held over this period.</p> <p><b><u>Recommendation</u></b></p> <p>That in respect of urgent matters that may arise from time to time between meetings of an area board, the Community Area Manager, in consultation with the unitary councillors on the area</p>	8.20 pm

board, be granted delegated authority to make any necessary decisions (such as agreement of CATG funding allocations and Community Area Partnership Funding). A report explaining the decision and the reasons why it was considered to be urgent shall be reported to the next ordinary meeting of the area board to ensure that such decisions are subject to public examination.

**Reason for Recommendation**

To facilitate the smooth and efficient running of area board business and to reduce the need for unnecessary extraordinary meetings.

And to note:

**Push it Wheel Good campaign** - at the ABC meeting held on 30 October 2012, the Area Board Co-ordinating group used it's delegated authority to spend £250 as a contribution towards promotional items for the use of young people involved in the Calne Bowl Project 'Push it Wheel Good' campaign, to raise a positive image of young people in the Calne Community Area.

13 **Close**

**8.30 pm**

The Chairman will set out arrangements for the next meeting.

**Future Meeting Dates**

Tuesday, 5 February 2013

6.30 pm

Calne Town Hall, The Strand, Calne SN11 0EN

Tuesday, 11 June 2013

6.30 pm

Calne Town Hall

Tuesday, 13 August 2013

6.30 pm

Calne Town Hall

# MINUTES

**Meeting:** CALNE AREA BOARD  
**Place:** John Bentley School, White Horse Way, Calne SN11 8YH  
**Date:** 16 October 2012  
**Start Time:** 7.00 pm  
**Finish Time:** 8.55 pm

---

Please direct any enquiries on these minutes to:

Alexa Smith (Democratic Services Officer), on 01249 706610 or [alexa.smith@wiltshire.gov.uk](mailto:alexa.smith@wiltshire.gov.uk)

Papers available on the Council's website at [www.wiltshire.gov.uk](http://www.wiltshire.gov.uk)

---

## **In Attendance:**

### **Wiltshire Councillors**

Cllr Alan Hill, Cllr Christine Crisp (Chairman), Cllr Howard Marshall and Cllr Anthony Trotman (Vice Chairman)

Cllr Jemima Milton (Portfolio Holder)

### **Wiltshire Council Officers**

James Cawley (Service Director), Will Kay (Youth Development Coordinator), Alexa Smith (Democratic Services Officer) and Jane Vaughan (Community Area Manager)

### **Town and Parish Councillors**

Calne Town Council – Mercy Baggs, Heather Canfer, David Short and Colin Viner  
Calne Without Parish Council – Richard Aylen and Ed Jones  
Hilmarton Parish Council – John Henly

### **Partners**

Wiltshire Police – Inspector Martin Schorah and Sergeant Simon Wright  
Wiltshire Fire and Rescue – Mike Franklin

Calne Community Area Partnership – Malcolm Gull and Anne Henshaw

**Total in attendance: 54**

---

<u>Agenda Item No.</u>	<u>Summary of Issues Discussed and Decision</u>
1	<p><u>Chairman's Welcome and Introductions</u></p> <p>The Chairman welcomed everyone to Calne Area Board and introduced the councillors and officers present. The Chairman welcomed Councillor Jemima Milton, Portfolio Holder for Adult Care and Housing in the North and explained that Councillor Milton would begin the community conversation.</p> <p>The meeting started with a presentation from Jeremy Griffiths from Victim Support, who had put up a display stand before the meeting. The presentation emphasised that Victim Support is an independent national charity for all victims and witnesses across England and Wales. The service gave free and confidential support and information to help sort out the problems caused by crime. Find out more from their website at: <a href="http://www.victimsupport.org.uk/getinvolved">www.victimsupport.org.uk/getinvolved</a>.</p>
2	<p><u>Apologies for Absence</u></p> <p>Apologies were received from Councillor Chuck Berry and Geoff Dickerson (Heddington Parish Council).</p>
3	<p><u>Minutes</u></p> <p>The minutes of the meeting held on 14 August 2012 were approved and signed as a correct record.</p>
4	<p><u>Declarations of Interest</u></p> <p>There were no declarations of interest.</p>
5	<p><u>Chairman's Announcements</u></p> <p>The Chairman drew attention to the written announcements included in the agenda pack.</p> <p>Councillor Crisp added there were information packs to find out more about becoming a local councillor available at the meeting, 'Do you have the x factor'. Please contact your Democratic Services Officer if you would like to receive a pack.</p>
6	<p><u>Partner Updates</u></p> <p>a. The written update from Wiltshire Police was noted. Inspector Martin Schorah explained this would be his last Calne Area Board meeting as he had been posted to The Control Room. His successor would be Inspector Phil Staynings from Swindon. He introduced Sergeant Simon Wright to the meeting. Inspector Schorah then went through his written update. The</p>

	<p>monthly young people’s disco Blues and Zuz had their highest ever turnout. There had been a significant decrease in anti social behaviour, in large part due to partnership working at The Pippin in Calne. Unfortunately, houses and outbuildings were being burgled in the local area. Inspector Schorah urged people to vote in the Police and Crime Commissioner Election on 15 November. The Chairman thanked Inspector Schorah for all his hard work over the past thirteen months with Calne Area Board.</p> <p>b. The written update from Wiltshire Fire and Rescue Service was noted. Mike Franklin encouraged people to sweep their chimney flues to reduce the risk of fire in the run up to winter.</p> <p>c. The written update from NHS Wiltshire was noted. The Chairman hoped the shift to Clinical Commissioning Groups would promote greater engagement from the health services with the area boards.</p> <p>d. Malcolm Gull gave an update about the Community Area Partnership. The community hub had been shortlisted by Wiltshire Council for a prestigious volunteering award. The community hub had received a cheque for £250 after coming in as a runner up in the top four of over three hundred initiatives. The Partnership was undertaking a major review and would now meet periodically to address specific issues. There would be an open day on December 7 to celebrate this success.</p> <p>e. Will Kay, Youth Development Co-ordinator, gave an update about the Community Area Young People’s Issues Group. Wiltshire Council for the last year had been piloting ‘Youth Advisory Groups’ (YAGs) joined to or associated with the local area board. A YAG was a group of young people that advised and worked alongside adults on issues of importance to them or that organisations asked their opinion on. The chair of YAG was a young person under the age of 25. This would be the new way of working in Calne.</p> <p>f. Calne Without Parish Council reported the white gates at Derry Hill had been started. Councillor Trotman added that the markings at Studley Crossroads were working well. Several councillors from Calne Town Council had been to a Jubilee planting and a fireworks display and Christmas festival were in the pipeline. The next main meeting of Calne Town Council would take place on 26 November.</p> <p>g. The written Wiltshire Involvement Network update report was noted.</p>
7	<p><u>Community Conversation</u></p> <p>Councillor Jemima Milton introduced the community conversation on the subject of ‘houses that fit local families’. Councillor Milton introduced James Cawley, Service Director for Strategy and Commissioning.</p> <p>James Cawley then gave a presentation about the housing situation in Calne.</p>

This covered the following main points:

- Basic stock profile of Calne – 65.7% owner occupied and 17.9% social housing
- Housing register breakdown – 17,088 houses were on the housing register across Wiltshire and 620 households expressed a first preference for Calne
- Social housing lettings in Calne – there were 611 total lettings across Wiltshire since April 2012 and 64 lettings in Calne with 56 households with a local connection
- Under occupation – 151 households in Calne were affected by under occupation – classed as such if you were under 65 years old and on benefits
- Review of allocations – The Localism Act 2011 introduced amendments to Part 6 of the Housing Act and provided new freedoms to set the rules determining which categories of applicants qualified for social housing.

This was followed by a question and answer session, supported also by Ann Cornelius, Managing Director at Green Square, and Helen Madle, Private Sector Housing Manager, Wiltshire Council.

The session incorporated the issues below:

- A case was raised regarding the length of time taken to move a family of six people from a two bedroom property in Woodroffe Square – James Cawley would meet with the family concerned and discuss confidentially. The issue was insufficient suitable property in Calne and how to encourage people to downsize.
- The condition of properties in Woodroffe Square - properties were getting older and more difficult to heat. Green Square had a systematic programme of going through properties to assess if they were fit for purpose. This was a large and costly task and would not happen overnight.
- How to start the process of receiving help from Homes 4 Wiltshire as a young single individual – the process can be started online or in person. The change to the Housing Act made it difficult for those aged under 25 to secure housing and a related issue was the lack of employment for young people.
- The statistics provided about affordable homes were questioned as new developments were providing 30% affordable housing. Even with this, there was not enough suitable accommodation to meet the needs in Calne.
- Households were asked why they chose Calne as their first preference. The three main reasons given were; because of family, employment or they had lived in Calne before.
- A planning application submitted with a 60 bed extra care home – some residents of Calne had received a leaflet from the developer Gleeson Homes asking for their comments. There was a large shortfall of housing for elderly people across the whole of Wiltshire. Wiltshire Council asked developers to invite the views of the community before they submitted an application. Once an application was received, Wiltshire Council would conduct its own consultation with town and parish councils and the .



	<ul style="list-style-type: none"> <li>Statistics for comparable towns in North Wiltshire were requested.</li> </ul> <p><b><u>Decision</u></b>  <b>James Cawley agreed to provide statistics regarding housing for comparable towns in North Wiltshire via Jane Vaughan, the Community Area Manager.</b></p>
8	<p><b><u>Calne Environmental Network</u></b></p> <p>Sue Wallace presented information about the Calne Environmental Network (CEN). The group was started a year ago with the idea of sustainability at its heart. Sue spoke about the work that CEN do; this included an informative website, a monthly newsletter, meetings and talks, an annual green Calne day, road shows, litter picks and stream cleans. CEN had set up an art of recycling event; using things that people had thrown away to create pieces of art that were displayed in the library. CEN had initiated the planting of wild flower seeds and planted beds in the town.</p> <p>Sue presented the idea of having a community garden in Calne. This was a vision inspired by a visit to Therapeutic Work In Gardening in Swindon (TWIGS). Working with the land could be both beneficial and therapeutic and the TWIGS project used gardening to help people with mental issues.</p> <p>Sue explained that she was looking for 1-2 acres of land available in Calne within easy access for as many people as possible. The Chairman took a show of hands to indicate levels of support for the project and the vast majority of the room were in favour. Please get in touch with Sue Wallace or Peter Knight on 01249 823287 or <a href="mailto:stoneseeker@waitrose.com">stoneseeker@waitrose.com</a> if you were able to help.</p>
9	<p><b><u>Your Local Issues</u></b></p> <p>Councillors provided an update on community issues and progress on Calne Area Board working groups.</p> <ol style="list-style-type: none"> <li>Tom Harris spoke about the skate board park working group as a young person involved. The group were focusing on the image of the project and fundraising. To raise money for the skate park, the group had arranged bag packing in the town, a dress down day at John Bentley School and had applied to the Viridor grant scheme.</li> <li>Councillor Crisp provided an update on the highways working group, please see written report attached to the minutes. Martin Cook, Area Highway Engineer, was thanked for his persistence improving an overgrown footpath. Councillor Crisp made clear the temporary permission for Murco delivery vehicles to travel through the Curzon Street weight restriction (early morning only, with a maximum of one per day) was coming to an end. This had been put in place as it was considered a safer option than the vehicle making a u-turn at The Pippin.</li> </ol> <p><b><u>Decision</u></b></p>

	<p><b>The County of Wiltshire (Various Roads, Calne) (Weight Restriction) Experimental Order 2011 would be made permanent. This related specifically to the delivery of fuel to the service station at 154 Oxford Road.</b></p> <p>c. Councillor Hill stated the Calne campus working group had produced a report which would be presented to Cabinet on 23 October. Councillor Hill was hopeful the project would receive the necessary funding and, if so, the intention would be to submit a planning application regarding the leisure centre in April 2013. Councillor Crisp added she would be writing to every member of the campus working group to thank them for their help with this intensive group.</p> <p>d. Councillor Trotman had met with the Sandpit Road (Section 106) working group to discuss safe pedestrian and cycle routes to schools. Plans had been completed and would be available to view at the community hub. Councillor Trotman confirmed unfortunately Abberd Lane was not within the remit of the working group. Residents had received a letter from an anonymous lobby group about the traffic implications of an extension to the local minerals extraction. Consultation had been extended until November when a strategic planning decision would be made. A report would be provided for the next area board meeting.</p> <p>e. Councillor Hill spoke about the air quality working group. Defra were due to create an Air Quality Management Area (AQMA) to address two hotspots in the community area. Consultation on the two options for the AQMA, with a smaller and larger option, was started at the meeting with a display stand and ballot box which was now in the community hub. The consultation would be sent out in a link on the newsletter and would be available on the area board webpage.</p>
<u>CATG report</u>	
10	<p><u>Area Board Funding</u></p> <p>The Chairman explained that two applications had been received for the Community Area Grant Scheme, but these had been deferred to the December meeting, waiting for further information.</p>
11	<p><u>Close</u></p> <p>The Chairman explained the next area board meeting would be held at 6.30 pm on 11 December at Hilmarton Community Centre, with refreshments available from 6.30 pm.</p>



# CALNE

Help us fit the next piece

*I am pleased to announce that there are plans to look at the future Masterplanning of Calne. The town council in partnership with Wiltshire Council are hosting a series of events aimed at local groups, land owners and residents to see what opportunities exist to plan future development for the town.*

*This was initiated in the town centre on Saturday 8<sup>th</sup> December, where a trailer exhibition displayed the Visions for Calne that a study had produced following earlier consultation. Members of the public who attended were able to feedback on the Visions and register their interest in future Masterplanning consultation. In mid January we are holding a series of events to involve the community at the Town Hall. These will provide an opportunity for the Calne community to influence future town development, to meet their needs but to take account of the limitations that exist, based on existing facility owners' constraints. The detail of the events are as follows:-*

<i>Wednesday 16 Jan</i>	<i>1900 to 2100</i>	<i>Opening session to set the context</i>
<i>Thursday 17 Jan</i>	<i>0930 to 1630</i>	<i>Town Centre and wider – a centre walking tour and strengths/weaknesses mapping workshop</i>
<i>Saturday 19 Jan</i>	<i>1000 to 1600</i>	<i>Recap on Town outcomes and a renewable energy session</i>

*In addition, later in February we plan to hold a housing workshop and to feed back on the findings from the consultation exercise.*

*This is an example of the Government's policy to seek greater local involvement in planning matters in practice. So I would urge as many of the members and attendees of this board to support the event and take the opportunity to have your say.*



# Crime and Community Safety Briefing Paper

## Calne Community Area Board

### 11<sup>th</sup> December 2012



## 1. Neighbourhood Policing Team

**Sgt:** Simon Wright

### **Town Centre Team**

Beat Manager – PC Hans MONAHAN

PCSO Barry MUSSARD

PCSO Gaynor BENNETT

PCSO Nicole YATES

PCSO Mark COOK

PCSO Shelley Gray ( currently on maternity leave)

### **Rural Team**

Beat Manager – PC Alan BLAKE

PCSO Andrew WILLOX

## 2. NPTs - Current Priorities & Consultation Opportunities:

1) A new priority for the Newbury Avenue area, it has been identified that there are groups of youths gathering in the green area of Newbury Avenue, they are loud and leave litter behind. Local residents have reported that they are becoming affected by this.

2) A new priority is about to be implemented in the Mill Street area of Calne, the area has historically been subject to late night ASB ranging from noise, to doors being knocked late at night causing upset and worry to local residents.

3) Speeding on the A342, Sandy Lane. This has been a priority since July, officers have carried out regular speed checks in the village and have dealt with numerous drivers who were travelling at excess speed.

Calne NPT Consultation Surgeries take place every Wednesday between 1400-1445hrs. They take place at the Community Hub, High Street, Calne.

□ Visit the new and improved website at: [www.wiltshire.police.uk](http://www.wiltshire.police.uk)

## 3. Police Authority Representative: Chris Caswill

Please contact via Wiltshire Police Authority Tel. 01380 734022 or <http://www.wiltshire-pa.gov.uk/feedback.asp>

#### **4. Performance and Other Local Issues:**

##### **WARRANT**

Calne Neighbourhood Policing team recently executed a warrant at an address in Campion Close, Calne. During the search items believed to be both Class A, and Class B drugs were found. One male was arrested from the property and is currently on Police bail, it is anticipated that he will be charged with offences relating to drug misuse on his return to Melksham Police Station.

##### **HALLOWEEN**

Halloween in Calne has, in the past, been a very busy night for the Police. This year plans were made to provide a heavy Police presence in the town. There were 10 Police officers patrolling the town, along with volunteers from the Town Council, the Police chaplain and also Councillor Redmond. The mood in the town was a positive one, and ultimately there was only one call for the whole of Calne during the evening which related to low level anti-social behaviour. As a result of pro-active foot patrols alcohol was seized, and words of advice given to a small number of youths. Overall I think it is fair to assess the evening as a success, perhaps in part due to the appalling weather (I think my kit has just about dried out now!) The presence of the above mentioned volunteers was certainly a positive influence on the outcome of the evening and for that I am sure you will join me in thanking them.

##### **CCTV**

Calne NPT have been working closely with the CCTV operators in the town to tackle crime and anti-social behaviour, particularly during Friday and Saturday evenings. With the assistance of the CCTV operators numerous Fixed Penalty Notices have been issued to offenders in the town for a variety of offences, including urinating in the street, and drunk and disorderly. This has been reinforced by ensuring that the local paper is reporting on the incidents in an effort to raise public awareness, and in turn discourage people from committing offences in the future.

##### **SHED BREAKS**

One of the biggest tasks we have tackled since the last Area Board has been an ongoing series of shed and garage break ins where bikes and other property have been targeted by the offenders. I am pleased to report that following extensive work by all officers on Calne NPT, and with help from officers on the response team and other specialist departments, the number of crime reports has fallen massively. There has not been an offence of this nature reported for over two weeks now. Enquiries are currently ongoing to try to bring the offenders to justice, the hard work will continue over the coming weeks, but initial results are pleasing.

## **SUMMARY**

I write this report having now been working in the town for two months, it has been a busy time for me, and Calne NPT in general! Personally I have been trying to get around and meet as many new faces as possible, I now feel like I have got a fair idea of who everyone is and how the town works. There are some familiar faces, and some new ones for me, but the overriding message seems to be that everyone wants to achieve the same goals which is reassuring for me!

For the NPT in general we have had a lot going on, Halloween, Bonfire night, Remembrance Day, and two Bluez and Zuz discos to name but a few. I have been really impressed with the team that I have inherited here at Calne. Their willingness to come in and work on their rest days, and change their duties about has been amazing. Without this flexibility I would really have struggled to deliver the Policing for the above events. For this I wish to publicly thank them.

I will be attending the Area Board meeting and would be happy to speak with anyone if they have an issue that they wish to raise. In the meantime please feel free to contact me at the Police station if there is anything you wish to discuss.

Regards-Simon Wright

Calne NPT Sergeant

EN Calne	Crime				Detections	
	November 2010 - October 2011	November 2011 - October 2012	Volume Change	% Change	November 2010 - October 2011	November 2011 - October 2012
Victim Based Crime	936	885	-51	● -5%	18%	21%
Domestic Burglary	60	41	-19	● -32%	8%	17%
Non Domestic Burglary	142	147	5	● 4%	3%	5%
Vehicle Crime	86	91	5	● 6%	2%	5%
Criminal Damage & Arson	239	174	-65	● -27%	11%	11%
Violence Against The Person	150	169	19	● 13%	51%	41%
ASB Incidents (Year to Date)	610	486	-124	● -20%		
Wiltshire Police are compared against a group of 8 most similar forces. Wiltshire Police have performed in line with peers and better than average for Violence Against the Person and Domestic Burglary in the previous 12 month period (October 2011 -September 2012).						
* Detections include both Sanction Detections and Local Resolution						

**Phil Staynings**

**Sector Head – Chippenham, Calne and Corsham**



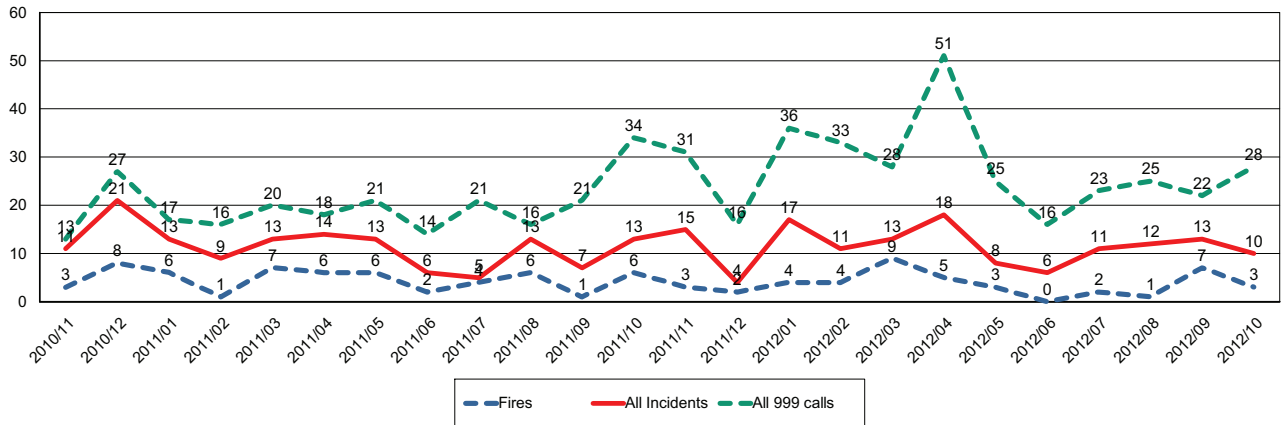




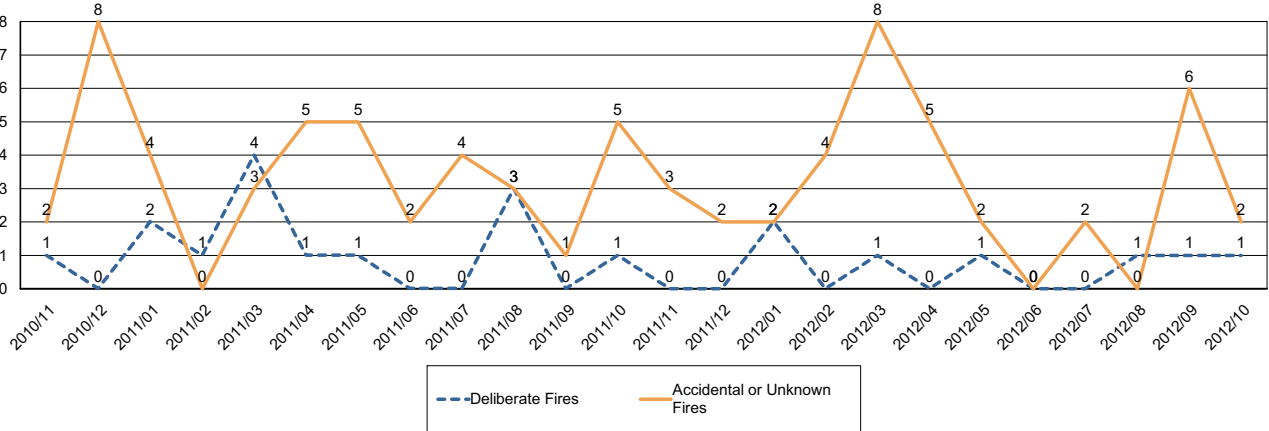
## Report for Calne Area Board

The following is an update of Fire and Rescue Service activity up to and including October. It has been prepared using the latest information and is subject to change.

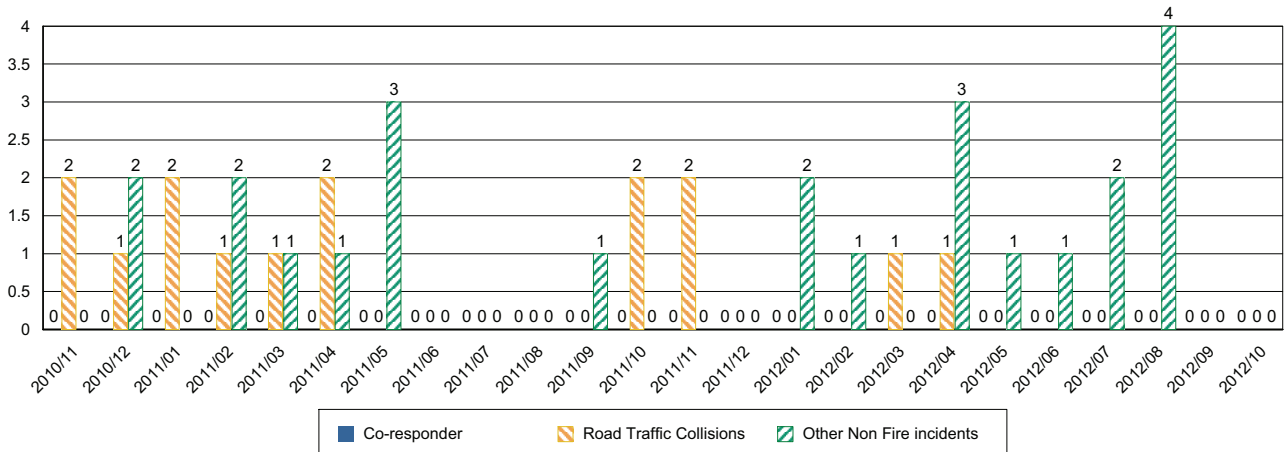
### Incidents and Calls



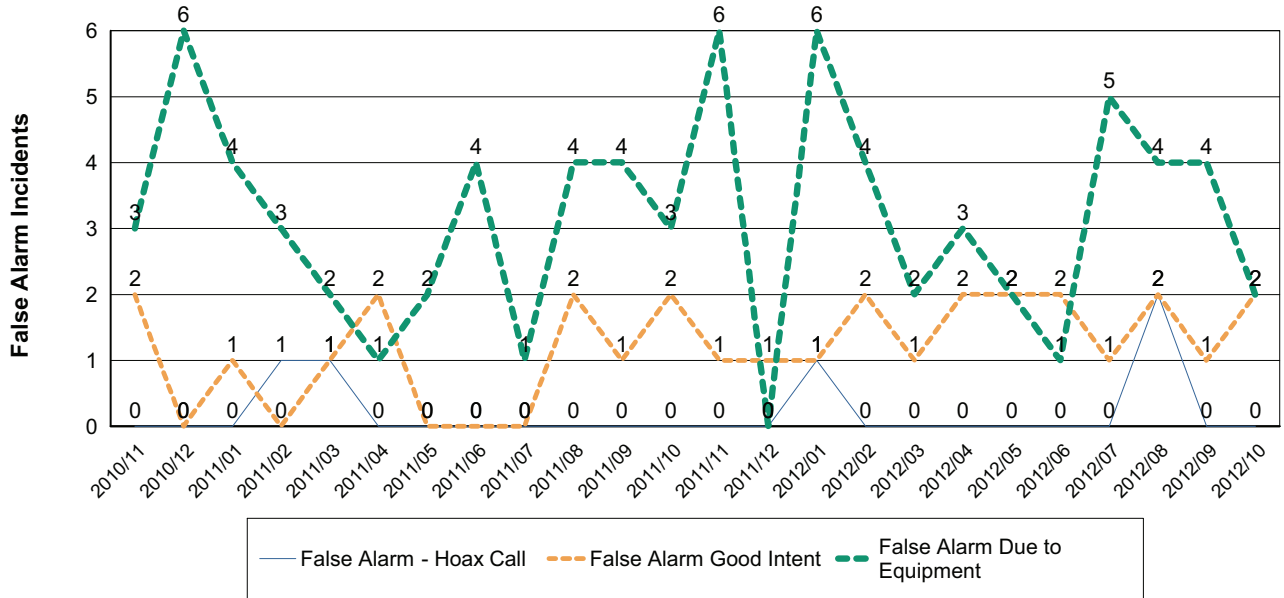
### Fires by Cause



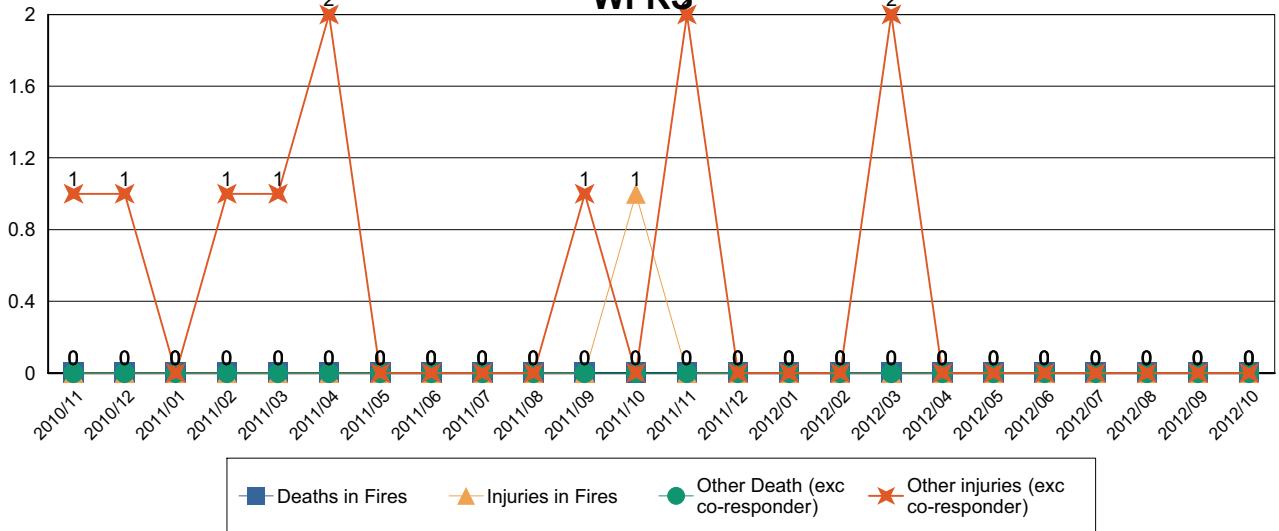
### Non-Fire incidents attended by WFRS



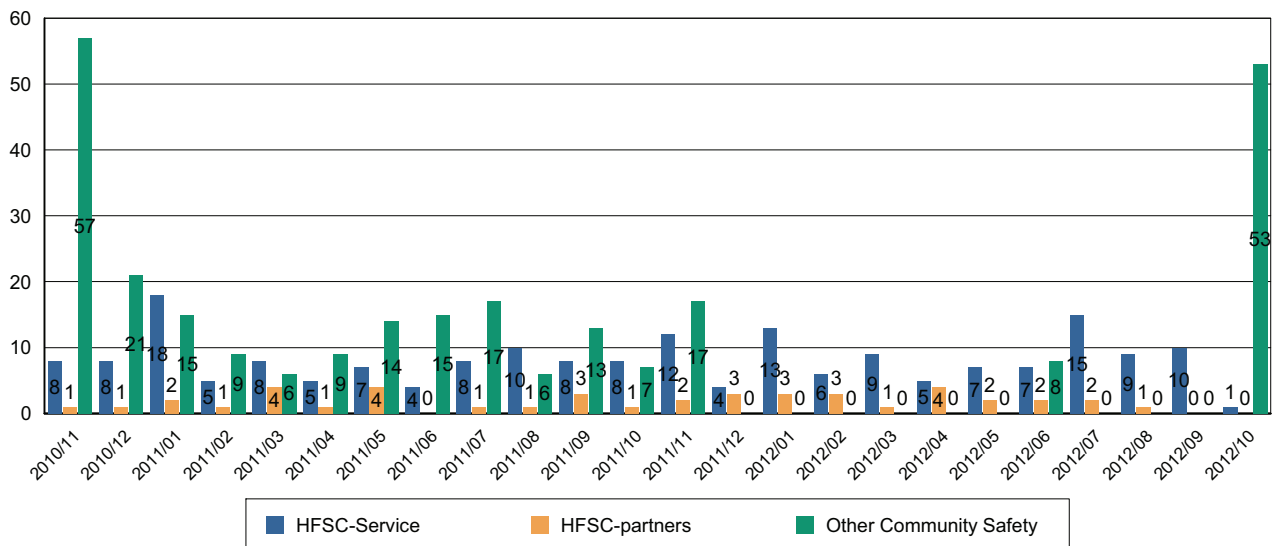
### Number of False Alarm Incidents



### Death & Injuries in incidents attended by WFRS



### Home Fire Safety Checks and other domestic safety



Comments and Interventions overleaf

## October 2012 update

### Pregnant women offered whooping cough jab

Pregnant women across Wiltshire are being offered the whooping cough vaccination, following a national increase in the number of cases.

The vaccination will boost short term immunity passed on by women to their babies while they're still in the womb. Newborns will still need to be vaccinated between two and four months of age, so that they continue to be protected.

GPs will be giving the vaccination to women who are at least 28 weeks pregnant, in order to optimise its effectiveness.

Whooping cough – or pertussis is a highly contagious bacterial infection of the lungs and airways. The condition usually begins with a persistent dry and irritating cough which progresses to intense bouts of coughing. These are followed by a distinctive 'whooping' noise.

The Department of Health is encouraging all women who are 28 weeks pregnant or more to have the vaccination because immunity from the vaccine will pass to your baby through the placenta, helping to protect them in their first few weeks of life

If you're approaching 28 weeks pregnant or more, please contact your GP practice to find out more about the vaccine and book an appointment to receive it.

For more information on the whooping cough vaccine in pregnancy, visit the NHS Choices website: <http://www.nhs.uk/Planners/vaccinations/Pages/Adultshub.aspx>

### Keep warm and well

Now that the clocks have changed and we have already seen temperatures plummet, NHS Wiltshire is urging people to keep warm and well this winter:

"The cold can have serious consequences, increasing the risk of strokes and heart attacks as well as colds and flu," says Medical Director Peter Jenkins; "Wrapping up warm, keeping the heating turned up and keeping a well-stocked medical cabinet incase you do catch a cold or flu are all sensible steps to take."

"It's particularly important to stay indoors during very cold weather if you have a respiratory illness – and all elderly people should avoid going out on icy pavements. This means staying at home until later in the morning when the ice has melted. Even if you have a doctor's appointment first thing, try and reschedule it for later – your surgery will usually be happy to help with this. It's better to wait than risk falling on the ice."

NHS Wiltshire has produced five top tips on staying warm and well this winter.

1. **Keep your home warm** – set your central heating to between 65 and 70 degrees Fahrenheit (18-21 degrees centigrade). Heat the room you sit in during

- the day to 70 degrees, and your bedroom to 65 degrees. When it's very cold (as it is at present), set the heating to come on earlier so that you're not waiting for your home to warm up.
2. **Have your flu jab.** Everyone over 65, or with a wide variety of health conditions, is entitled to one free of charge. Immunity takes effect almost immediately, so even though a flu outbreak is currently well underway, you can still protect yourself by getting the jab – just call your GP to make an appointment.
  3. **If you do fall ill with flu, it's best to stay at home.** Flu is caused by a virus, and cannot be treated with antibiotics – so a visit to your GP is not necessarily the best course of action.
  4. **Vomiting and diarrhoea bugs** caused by norovirus are common and very infectious. This can be a very unpleasant condition, but the best advice is to stay at home and drink plenty of fluids until the symptoms pass. Norovirus is highly infectious, with an incubation period of between one and three days. For that reason, you should wait 48 hours after symptoms have stopped before going back to work or school.
  5. **Keep a well-stocked medicine cabinet**, with supplies of ibuprofen, paracetamol and your favourite cold remedy at hand.

#### **Where to go when you're ill**

The following points should be helpful when deciding who to contact.

- Pharmacies offer over-the-counter medicines and advice. As well as being open during regular retail hours, they operate an out-of-hours service on a rota basis;
- Call NHS Direct for advice on 0845 46 47 or go to [www.nhsdirect.nhs.uk](http://www.nhsdirect.nhs.uk). They can give a wide range of advice and information about many conditions;
- Use the minor injuries units at Chippenham and Trowbridge for cuts, burns and other injuries – but not for colds, flu or vomiting;
- Make an appointment with your own GP - an out-of-hours service is also available;
- If it is a genuine emergency, go to your local A&E department or call 999 for an ambulance.

**The next PCT Cluster Board Meeting will be held on Wednesday 28 November at 10am in the Conference Room, Southgate House, Pans Lane, Devizes.**

Members of the public are welcome to attend. Papers are published a week before the meeting on [www.wiltshire.nhs.uk](http://www.wiltshire.nhs.uk) or on request from Stacey Saunders, NHS Wiltshire, email: [stacey.saunders@wiltshire.nhs.uk](mailto:stacey.saunders@wiltshire.nhs.uk)



## CALNE COMMUNITY AREA PARTNERSHIP

### **December 2012 Update**

CCAP held its AGM in October which outlined the review process that CCAP had undergone that had resulted in a new way in which CCAP will work. It was accepted that CCAP doesn't meet all the original (2002) objectives as it has outgrown the original model. Essentially, the Localism Bill and consultation reports such as the Joint strategic Assessment (JSA) have changed the way that CAPs operate.

As a result, the (CCAP) Steering Group would change its way of working from 'silo' based to an 'issue / discussion' based meeting, focusing on 1 or 2 issues until a conclusion is reached. Additionally, CCAP would make better use of electronic means, generate newsletters, reorganise the website as well as making use of social media sites to increase community awareness of issues and solutions.

At the first meeting of the SG after the AGM, Malcolm Gull was elected as the Chair for a period of 3 years and Paul Ogden (President, Calne Chamber of Commerce) was elected as the Vice-Chair.

The Crime & Safety, Transport, Health & Social Care and Environment Theme Groups have continued to provide an extremely good platform for social engagement within specific areas, however, groups such as Housing, Education and Economy still had to find momentum.

Overall it had been a successful year for the Community Hub with more volunteers being attracted and more recognition from within the community. The original 12 month lease has now been extended to 2013 and we are in the process of negotiations to extend the lease further to come into line with Calne Community Campus coming on stream.

As you are aware, the Calne Area Board nominated the Community Hub for an award for 'best community initiative nominated by an Area Board' and received a runners-up award of £250. All Hub volunteers received a cheque for £25 as a thank-you for their hard work. The remainder of the money was used to fund the Christmas Open Day on 7<sup>th</sup> December 2012. The Open Day was a celebration of the 2 years that CCAP has been in existence.

## **Theme Group Reports**

### Health and Social Care Forum (David Evans)

During the year the group have met regularly in the James House lounge to discuss local health and social care issues with attendance by GP Practice Managers, NHS Wiltshire staff, Wiltshire Council Adult Social Care and voluntary sector professionals as well as local residents and representatives from voluntary organisations. Short presentations have been given by statutory and voluntary organisations working in health and social care in the Calne Community Area to understand how the changes in health and social care will impact on local residents. Issues of concern are taken up with the relevant organisation.

### Transport (Anne Henshaw)

This group is working on a number of projects with the community area that include the following:-

- Working with the Section 106 group to determine how the funds can best be used on transport issues
- Working with the Campus WG on discussions relating to transport linkage between the 3 Campus sites
- Working with Town Council to get transport boards sites given permission
- Discussions through Campus, Neighbourhood Plan and with Town Council on a Calne Community Bus
- Working towards a bike event next summer.

### Crime & Safety (Ross Henning)

This group has initiated the Calne Community Safety partnership and provides an excellent forum for partnership working between the Police and relevant community organisations. In fact it is recognised as the most successful community safety partnership in Wiltshire.

It is currently initiating community support with the police, resulting in members of the community as well as officers from Calne Town Council accompanying police patrols on specific nights.

In addition, this group is developing the Calne Emergency Plan in conjunction with all the relevant officers from the Town & Wiltshire Councils and with input from the community.

### Environment (Peter Knight & Sue Wallace)

This group carries on from the good work that was started by Francis Bosworth with the Abberd Brook clean up campaign. Peter and Sue have now amalgamated their own environmental group (Calne Environmental Network – CEN) into this group. It continues to

make a very positive impact on the Calne community area with initiatives such as litter picking and a plastic bag amnesty.

Francis is still an active member of the group and was recently presented with a certificate on achieving level 3 of the RHS "It's your neighbourhood" scheme at the RHS Britain in Bloom award ceremony.





<b>Report to</b>	<b>Calne Community Area Board</b>
<b>Date of Meeting</b>	<b>11<sup>th</sup> December 2012</b>
<b>Title of Report</b>	<b>Community Area Grants</b>

## **Purpose of Report**

To ask Councillors to consider 3 applications seeking 2012/13 Community Area Grant Funding:

- 1. CCAP – Page Turners project** - requesting £995 to provide 2 projects promoting reading and literacy amongst children aged 8 – 11 and 11 – 14.

*Officers recommend that a grant of £995 is awarded.*

- 2. Calne Tennis Club** – requesting £5,000 towards 4 new floodlit hard tennis courts at the Beversbrook Sports facility.

*Officers recommend that a grant of £5,000 is awarded, conditional upon the balance of funding being in place; all lease/landownership issues being confirmed and upon the applicant's agreement to provide evidence of accessible membership opportunities and attempts to involve young people and families on low income to the Area Board following completion of the project.*

- 3. St Laurence Church Hilmarton Parochial Church Council** – requesting £4025 towards the provision of a new kitchen/disabled toilet and nappy changing facilities.

*Officers recommend that a grant of £4025 is awarded, conditional upon the balance of funding being in place.*

And to note:

**Push it Wheel Good campaign** - at the ABC meeting held on 30<sup>th</sup> October 2012, the Area Board Co-ordinating group had used it's delegated authority to spend £250 as a contribution towards promotional items for the use of Young People involved in the Calne Bowl Project 'Push it Wheel Good' campaign, to raise a positive image of young people in the Calne Community Area.

## 1. Background

- 1.1. Area Boards have authority to approve Area Grants under powers delegated to them by the Deputy Leader and Cabinet member for Community Services. Under the Scheme of Delegation Area Boards must adhere to the Area Board Grants Guidance for funding.
- 1.2. In accordance with the Scheme of Delegation, any decision of an Area Board that is contrary to the funding criteria and/or the officer's recommendation would need to demonstrate that the application in question has a wider community benefit, and give specific reasons for why this should justify an exception to the criteria.
- 1.3. The emphasis in the Coalition Government's Localism agenda supports the ethos of volunteering and community involvement. With this in mind Community Area Grants should be encouraged from and awarded to community and voluntary groups.
- 1.4. Area boards will not consider applications from town and parish councils for purposes that relate to their statutory duties or powers that should be funded from the local town/parish precept. However this does not preclude bids from town/parish councils, encouraging community projects that provide new opportunities for local people or those functions that are not the sole responsibility of the town/parish council.
- 1.5. In addition to Community Area Grants, Councillors can submit an Area Board Project which differs from Community Area Grants in that they do not require match funding. Area Board Projects should not be used to avoid complying with Community Area Grant criteria.
- 1.6. Area Board Projects are designed to enable the Area Board to address community issues or projects identified in the Community Plan/Local Agreement for Wiltshire. An application form is used and quotes for project work have to be provided in a similar manner to the Community Area Grant Scheme.
- 1.7. Officers are required to provide recommendations in their report, although the decision to support applications and to what level is made by Wiltshire Councillors on the Area Board.
- 1.8. Funding applications will be considered at every Area Board meeting.
- 1.9. Paper copies of funding applications will no longer appear as part of the agenda in an attempt to reduce volume of paper used. However, the application forms will be available on the Wiltshire Council web site and hard copies available upon request.
- 1.10. Information and forms are available at: ([www.wiltshire.gov.uk/areaboards](http://www.wiltshire.gov.uk/areaboards)) or paper versions are available from the Community Area Manager.

<p><b>Background documents used in the preparation of this Report</b></p>	<ul style="list-style-type: none"> <li>• Community Area Grant Application Pack 2012/13</li> <li>• Calne Community Area Plan – 2004-14 (incl. 2006/2010 update)</li> <li>• Area Board Grants Guidance 2012/13</li> <li>• Wiltshire Joint Strategic Assessment 2011</li> <li>• Experiences of Poverty &amp; Educational Disadvantage – Joseph Rowntree Foundation 2007 (<a href="http://www.jrf.org.uk">www.jrf.org.uk</a>)</li> </ul>
---	--

## **2. Main Considerations**

- 2.1. Councillors will need to be satisfied that grants awarded in the 2012/13 year are made to projects that can realistically proceed within a year of the award being made.
- 2.2. The funding contained within this report forms the 5<sup>th</sup> of 6 rounds of funding for 2012/13.
- 2.3. The final round of Calne Community Area grants will be considered at the Area Board meeting to be held on:
  - 5<sup>th</sup> February 2013 (deadline for applications: 21<sup>st</sup> December 2012)

## **3. Environmental & Community Implications**

Community Area Grants will contribute to the continuance and/or improvement of cultural, social and community activity and wellbeing in the community area, the extent and specifics of which will be dependent upon the individual project.

## **4. Financial Implications**

- 4.1. Awards must fall within the Area Boards budget allocated to the Calne Community Area Board.
- 4.2. Following awards made at the meeting up to and including 12<sup>th</sup> June 2012 the budget remaining available to the Calne Community Area Board for 2012/13 was £28,814.
- 4.3. Following the contribution decided at the Area Board Co-ordinating group meeting on 30<sup>th</sup> October 2012 the balance remaining was £27,764.
- 4.4. If grants are awarded in line with officer recommendations, the Calne Community Area Board will have a balance of £17,744.

## 5. Legal Implications

5.1. There are no specific Legal implications related to this report.

## 6. HR Implications

6.1. There are no specific HR implications related to this report.

## 7. Equality and Inclusion Implications

7.1. Community Area Grants give all local community and voluntary groups, Town and Parish Councils an equal opportunity to receive funding towards community based projects and schemes.

7.2. Implications relating to individual grant applications are outlined within section 8 – “Officer Recommendations”.

## 8. Officer recommendations

Ref	Applicant	Project proposal	Funding requested
8.1	Calne Community Area Partnership	2 ‘Pageturners’ projects promoting reading and literature amongst children aged 8 – 11 and 11 – 14.	£995

8.1.1. **It is recommended that Calne Community Area Partnership is awarded a grant of £995 towards 2 imaginative and fun projects that will promote reading and literature to children and young people from the Calne Community Area.**

8.1.2. Officers are of the opinion that this application meets grant criteria for 2012/13.

8.1.3. The project addresses issues in the Calne Community Area Plan, providing positive activities for young people and children and also ensuring that learning opportunities are available to all members of the community in an environment that encourages people to take part.

8.1.4. The project also addresses issues that are identified in the Joint Strategic Assessment for Wiltshire (2011) with specific regard to the Calne Community Area:

- 2 wards (Abberd & Priestly) feature in the 10% most deprived in Wiltshire
- An above average % of children are living in poverty
- Education results are below national averages

- 8.1.5. In a report on the experiences of poverty and educational disadvantage, by the Joseph Rowntree Foundation (JRF), it is recognised that ‘children growing up in poverty and disadvantage are less likely to do well at school. This feeds into disadvantage in later life’ ... and this in turn perpetuates a circle of poverty and disadvantage through generations of family which could be linked outwards to other issues that are experienced in the Community Area such as higher than average numbers of people receiving out of work benefits, and incidents of perceived anti social behaviour.
- 8.1.6. It is generally recognised that there is a link between confidence, self esteem and literacy skills. The JRF report recommends the creation of environments outside of mainstream school that ‘allow children to develop new learning relationships’ and an ‘imaginative range of activities in which children are able to develop more positive relationships ... and feel more in control of learning than they do at school’.
- 8.1.7. The project will take place at the Community Hub, a neutral venue that lacks the perceived formality and conformity of a school or official building.
- 8.1.8. The project will be facilitated by Pageturners a locally based group that uses humour, art, drama and creative writing activities to promote reading for pleasure and encourage ideas of books as fun. Each participant will be given a copy of the book they are working with and the project will culminate with an event at the Library for parents/siblings etc to attend. This will provide an opportunity for whole families to engage with their local library and get enthusiastic about reading.
- 8.1.9. This project will be open to everyone in the community area within the age ranges of the sessions, however it will be targeted at, and is hoped will be of particular appeal to, children and young people who are in specific need of encouragement to read more.
- 8.1.10. The Community Partnership has already run a Pageturners Project as a pilot; this was over-subscribed and was felt to be a great success. Interest has already been expressed by potential participants in the projects proposed in this application
- 8.1.11. An award to this project will cover 100% of the cost of 2 programmes for 8 – 11 year olds and for 11 – 14 year olds.
- 8.1.12. If the Area Board makes a decision not to fund the project the scheme will be delayed while alternative funding is sought.

<b>Appendices:</b>	<b>Appendix 1 Grant application – CCAP / Pageturners project</b>
--------------------	--

Ref	Applicant	Project proposal	Funding requested
8.2	Calne Tennis Club	4 new floodlit hard tennis courts at the Beversbrook Sports facility.	£5,000

- 8.2.1 It is recommended that Calne Tennis Club is awarded a grant of £5,000 towards the creation of 4 floodlit hard tennis courts, conditional upon the balance of funding being in place; all lease/landownership issues being confirmed and upon the applicant's agreement to provide evidence of accessible membership opportunities and attempts to involve young people and families on low income to future Area Board meetings following completion of the project.**
- 8.2.2 Officers are of the opinion that, once issues addressed in the conditions laid out in 8.2.1 have been met, this application meets grant criteria for 2012/13.
- 8.2.3 Members might wish to consider that this application has been received from a Club, which charges membership fees. Officers have held lengthy conversations with the applicant and are of the opinion that it is the intention of the club to reach out more widely to the community and to work towards providing accessible membership terms for young people and families on low incomes.
- 8.2.4 Calne Area Board has previously discussed the specific issue of young women dropping out of physical activities in their teenage years and the possible subsequent detrimental effect upon women's health. The applicant has been in discussion with Wiltshire Council's Sports Development Team about opportunities to develop this sport to the wider community and in particular to young people and families on low income and people with disabilities.
- 8.2.5 The Sports Development Officer has advised he is of the opinion that this is a good project, which will meet a need in the Community Area and that he has provided the applicant with information and offered support and tools to assist in the creation of a development plan to target and engage different groups.
- 8.2.6 Members may also wish to consider that Beversbrook Sports facility is currently under the ownership of Wiltshire Council and is leased to Calne Town Council for a peppercorn rent. Officers have made investigations which have shown it is likely the Area Board will be approached in the relatively short term to consider this as a site for community asset transfer. Calne Town Council is not contributing towards the cost of this project, but it has been suggested it will provide the land for the project and will waive rental charges for the initial 2 – 4 years. These matters are not confirmed and officers would recommend that a positive response to this application should be made conditional upon these matters being settled.
- 8.2.7 A further consideration that Members may wish to consider is that the Town Council already manage public tennis courts at the Anchor Road Recreation Ground. The applicant has advised that these are past their design life expectancy and do not

provide the facilities that are required to increase the experience of this sport to the wider community and especially junior sections of the club.

**8.2.8** The project addresses issues in the Calne Community Area Plan, providing positive activities for young people and children.

**8.2.9** This project is a major piece of work for the tennis club and, provisionally, a significant amount of the funding has already been found. The sum that has been requested from the Area Board represents approximately 3% of the total project cost.

**8.2.10** If the Area Board makes a decision not to fund the project the scheme will be delayed while alternative funding is sought.

<b>Appendices:</b>	<b>Appendix 2 Grant application – Calne Tennis Club</b>
--------------------	---

Ref	Applicant	Project proposal	Funding requested
8.3	St Laurence Church Hilmarton Parochial Church Council	Phase 1 (New Kitchen, disabled/toilet/nappy changing facilities) of a 'Community Corner' in Hilmarton Church.	£4025

**8.3.1** It is recommended that **St Laurence Church Hilmarton Parochial Church Council is awarded a grant of £4,025 towards the provision of a new kitchen/disabled toilet and nappy changing facilities.**

**8.3.2** Officers are of the opinion that this application meets grant criteria for 2012/13.

**8.3.3** The project addresses aspirations in the Calne Community Area Plan to increase recreation land and facilities in the Calne Community Area, to exceed national guidelines.

**8.3.4** This project will provide accessible space within the Parish Church in Hilmarton that will allow it to be used for secular activities (concerts/exhibitions/seasonal festivals/local social and interest groups etc).

**8.3.5** Although Hilmarton already has a community hall, the applicant has explained that this is not available during school hours and there is an aspiration to provide activities in the church during these times for people who find leaving home a difficult experience as a result of age, infirmity, disability etc.

- 8.3.6** A consultation exercise has been carried out with households in the Parish which has shown that people will be more likely to attend events and activities in the church if better facilities are available.
- 8.3.7** The Parish Council has granted £1,000 to the Parochial Church Council, which will be put towards this project and the PCC will also be putting forward £668 from its own fundraising activities.
- 8.3.8** The grant being requested from the Calne Area Board represents 50% of the total cost of the project.
- 8.2.11** If the Area Board makes a decision not to fund the project the scheme will be delayed while alternative funding is sought.

<b>Appendices:</b>	<b>Appendix 3 Grant application – Hilmarton Parish Church</b>
--------------------	---

No unpublished documents have been relied upon in the preparation of this report.

<b>Report Author</b>	Jane Vaughan, Community Area Manager Tel: 01249 706447 E-mail <a href="mailto:jane.vaughan@wiltshire.gov.uk">jane.vaughan@wiltshire.gov.uk</a>
----------------------	--